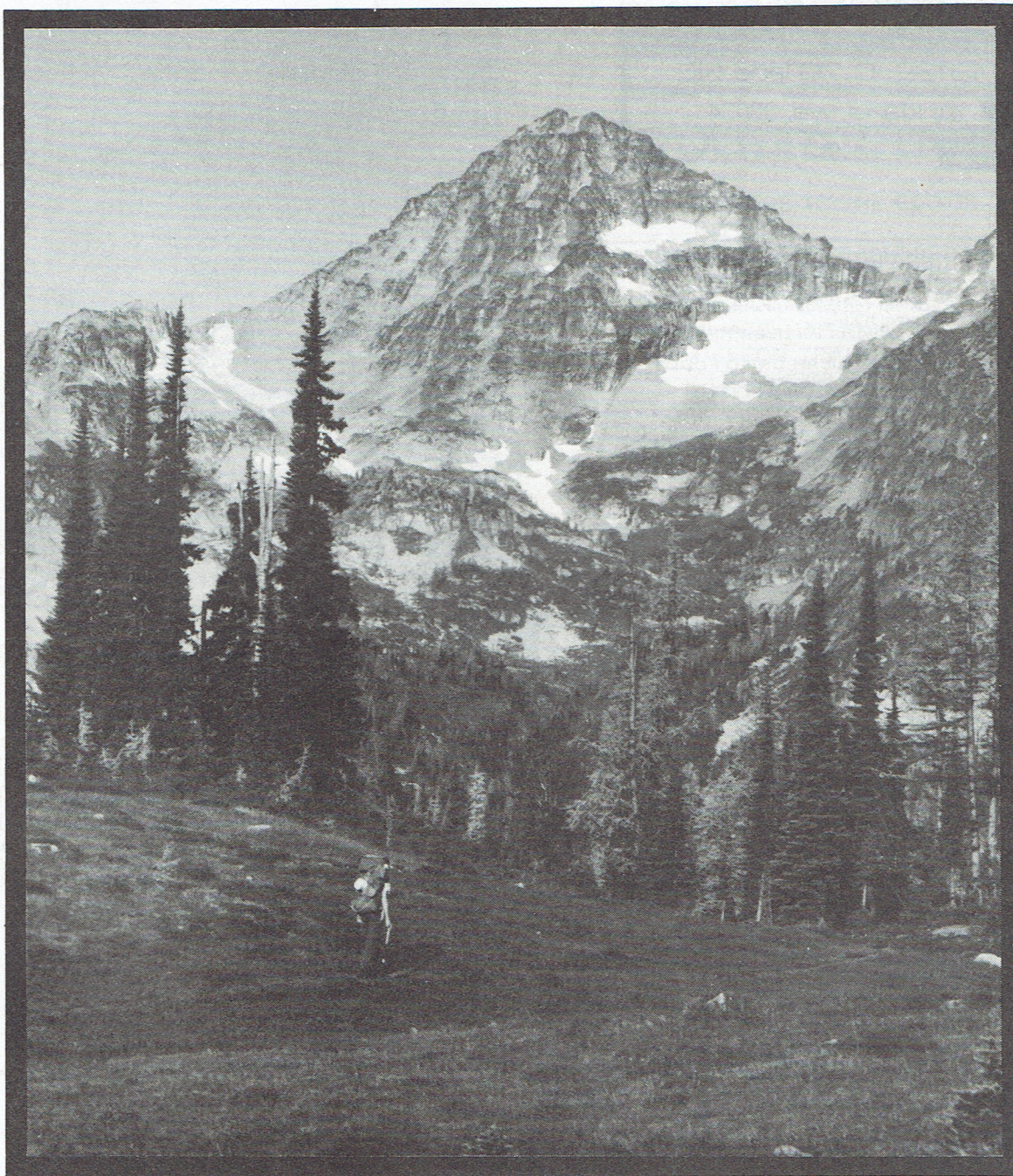


signpost

FOR NORTHWEST TRAILS



INSIDE—
BACKPACKING WITH YOUR DOG
ON THE CREST TRAIL

JUNE 1984
\$2.00

signpost

FOR NORTHWEST HIKERS

VOLUME 19, NUMBER 6



LGM

Just as this posted sign shares information or offers guidance, so SIGNPOST, the magazine, is also a means of communication. Readers are invited to submit material for publication as a way to share with others their thoughts, discoveries, and experiences.

Material should be of interest to trail users in the Pacific Northwest states and neighboring regions. We accept these submissions as contributions to the cause of safer and more enjoyable trail travel; if payment is requested, it will always be a rather modest amount.

We can't print everything—our pages are limited—but any trip reports not used go into our data bank to help answer inquiries. All poetry, art work, and feature articles are seriously considered for inclusion in Signpost. If in doubt, before spending a lot of time on a project, ask the editors if your contribution will be timely.

How to reach the Signpost office:

Drive I-5 north from Seattle to Exit 183. Go west on 164th Street SW to 36th Avenue W. At the stoplight at the top of the hill turn left (south). In a quarter mile, watch for Signpost sign by driveway on the right. Park and walk to red barn at back of property—and there we are.

Founder of Signpost and Northwest Trails Association:
Louise B. Marshall

Copyright 1984 by Northwest Trails Association, a non-profit corporation with offices at 16812 36th Avenue West, Lynnwood WA 98037. Phone 206/743-3947. Published 12 times a year, monthly January through December. Subscription rates for one year are: Standard—\$16 U.S. and foreign countries; Sustaining—\$25; Limited Budget—\$10. U.S. funds only. Second class postage paid at Lynnwood WA 98037. Printed by Little Nickel, Lynnwood WA ISSN 0583-2594

features:

- 11 THE CALYPSO ORCHID
Nicolin Gray
- 12 ON THE CREST TRAIL
Ann Marshall
- 16 BACKPACKING WITH YOUR DOG
Barbara Petite
- 18 THE TRAIL THAT ONCE WAS
Marcel Malden
- 20 WHERE TO GO BACKPACKING
Ann Marshall

departments:

- 4 LETTERS TO THE EDITOR
- 5 REPORTS
- 22 NORTHWEST EXPLORER
- 25 EDITORIAL COMMENTS
- 25 KEEPING PACE
- 27 WHAT'S HAPPENING
- 28 OREGON TRAILS
- 30 CLASSIFIEDS

cover photo:

Signposter Stephen Fry at Heather Pass, with Black Peak on the skyline, North Cascades National Park. Photo by Stephen Fry.

staff:

EDITOR
Ann Marshall

CIRCULATION
Plum Moore

INTERN
Geoffrey Drake

OREGON OFFICE
939 Northwest Sycamore St.
Corvallis OR 97330

OREGON EDITORS
David & Mary Bucy

503/752-5612 (1-9 pm)

WASHINGTON OFFICE
16812 36th Avenue West
Lynnwood WA 98037

WASHINGTON EDITOR
Ann Marshall

206/743-3947 (24 hours)